



HEALTH & HOUSING

Healthy People, Healthy Neighborhoods

Agenda

Who is ONE NB?

What is our Community Development Approach?

How do we bridge the relationship between health & housing?

What is the impact of our new housing initiative?



ONE Neighborhood Builders



ONE NB's Health Equity Work


- Addressing local health disparities through collaboration
 - *Residents*
 - *Organizations*
 - *Elected Officials*
- HEZ (Health Equity Zone)
- 2019 Health Equity Projects
 - *Opioid Epidemic*
 - *Chronic Disease*
 - *Climate Resiliency*
 - *Community Health Workers*
- Improving neighborhood safety by providing quality housing
- Improving the built environment in blighted areas



SMALL HOMES, BIG IMPACT

Addressing social & environmental determinants of health
through innovative new housing options





~900 sq. ft of living space

affordable,
prefabricated panels

simple & efficient
assembly process



quality, affordable housing
deemed significant SEDOH*

25% decrease in family size

developed to accommodate
smaller households

*Office of Disease Prevention and Health Promotion

Tight Air Envelope

Premium air quality,

Reduced exposure to toxins.

thicker walls & multi-layer window panes
ensure homeostasis in indoor air quality

carefully-selected eco-friendly materials



One in three U.S. households faces a challenge in meeting energy needs

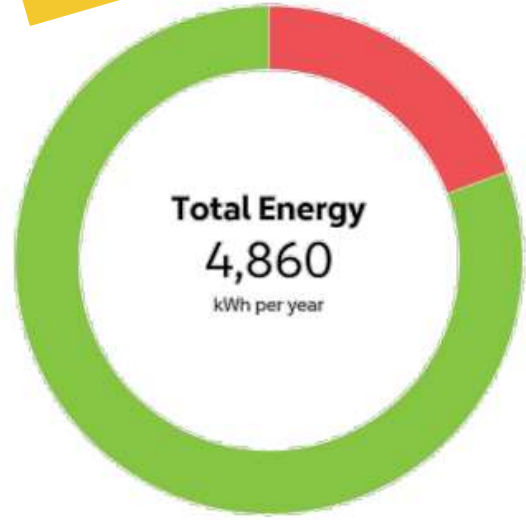
- (31%) reported facing a challenge in paying energy bills or sustaining adequate heating and cooling
- one in five households reported reducing or forgoing necessities such as food and medicine to pay an energy bill

Source: U.S. Energy Information Administration, Residential Energy Consumption Survey 2015



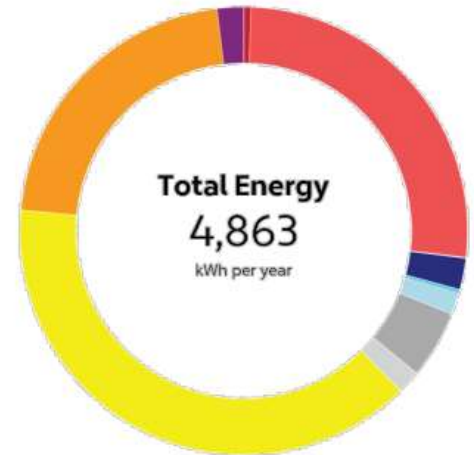
Model 1

Annual Energy Mix



Segment	kWh per year	% of total use
Non-renewable	940	19 %
Gas	0	0 %
Electricity	940	19 %
Renewable	3,920	81 %
Solar	3,920	81 %

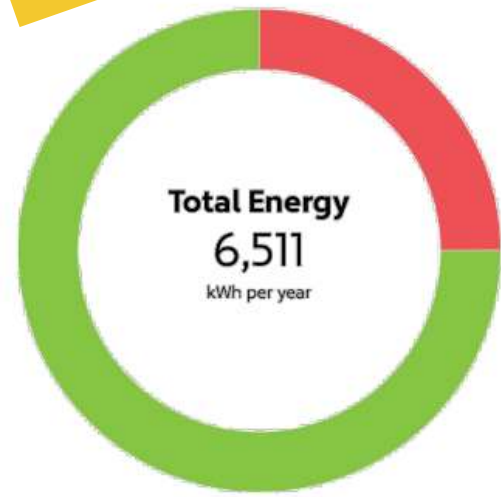
Annual Energy Use



Segment	kWh per year	% of total use
Heating	1,311	27 %
AHU	25	1 %
Zones	1,283	26 %
Humidification	3	0 %
Cooling	199	4 %
AHU	110	2 %
Heat Rejection	15	0 %
Zones	74	2 %
Fans	321	7 %
AHU	239	5 %
Zones	82	2 %
Interior	2,939	60 %
Lighting	1,889	39 %
Equipment	1,050	22 %
Pumps	93	2 %

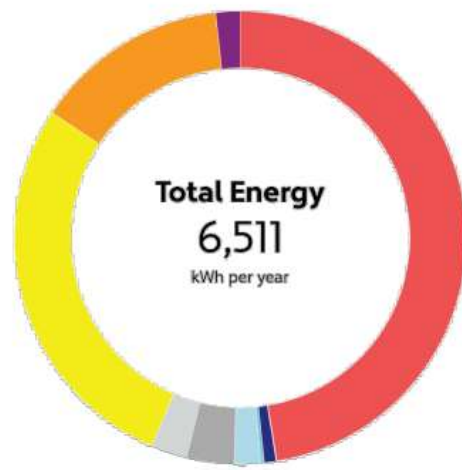
Model 2

Annual Energy Mix



Segment	kWh per year	% of total use
Non-renewable	1,626	25 %
Gas	0	0 %
Electricity	1,626	25 %
Renewable	4,885	75 %
Solar	4,885	75 %

Annual Energy Use



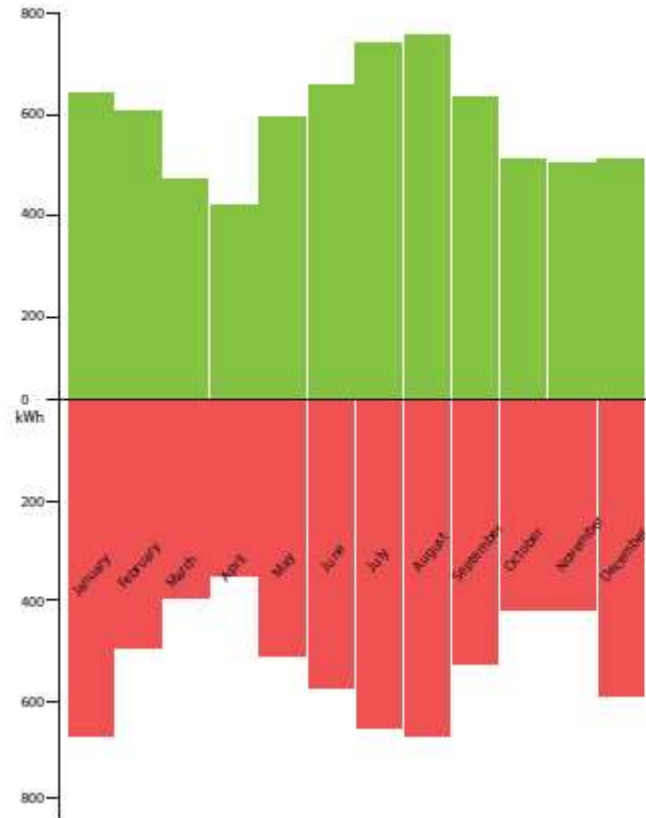
Segment	kWh per year	% of total use
Heating	3,090	47 %
AHU	0	0 %
Zones	3,087	47 %
Humidification	3	0 %
Cooling	193	3 %
AHU	55	1 %
Heat Rejection	16	0 %
Zones	122	2 %
Fans	391	6 %
AHU	222	3 %
Zones	169	3 %
Interior	2,723	42 %
Lighting	1,815	28 %
Equipment	908	14 %
Pumps	114	2 %

Significant Reductions in Energy Costs



PV Panel Efficiency = 20%
PV Panel Area = 263 ft²

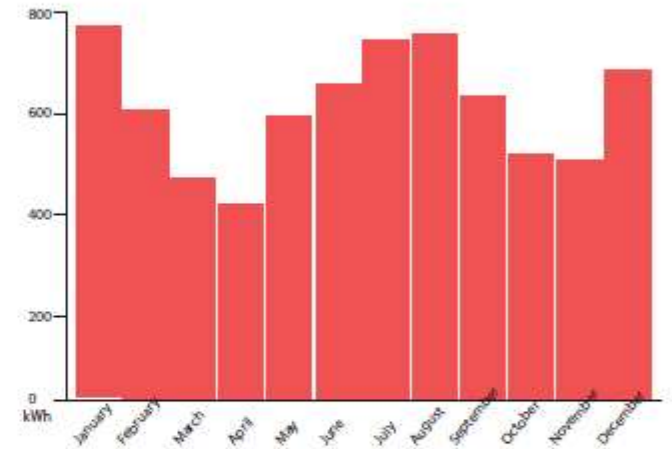
- Solar Energy
- Non-renewable Energy (Gas, Electricity)



W/PV



- Non-renewable Energy (Gas, Electricity)



W/O PV



To Learn More:

Jennifer Hawkins

Executive Director

ONE Neighborhood Builders

ONEneighborhoodbuilders.org

Hawkins@onenb.org

401-351-8719 x 101

ONE

NEIGHBORHOOD
BUILDERS

The logo features the word "NeighborWorks" in a bold, black, sans-serif font. Above the letters "i" and "o" in "Neighbor" are two simple black outlines of houses. A registered trademark symbol (®) is located at the end of the word. A thin horizontal line is positioned below the text.

NeighborWorks®